

OAK GLADE ADDITION

BRYAN, TEXAS

D/R Vol. 164 Page 391

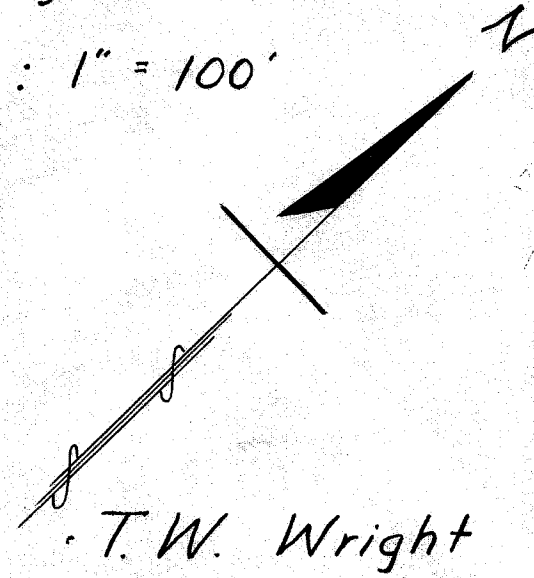
Date: July 16, 1954

Scale: 1" = 100'

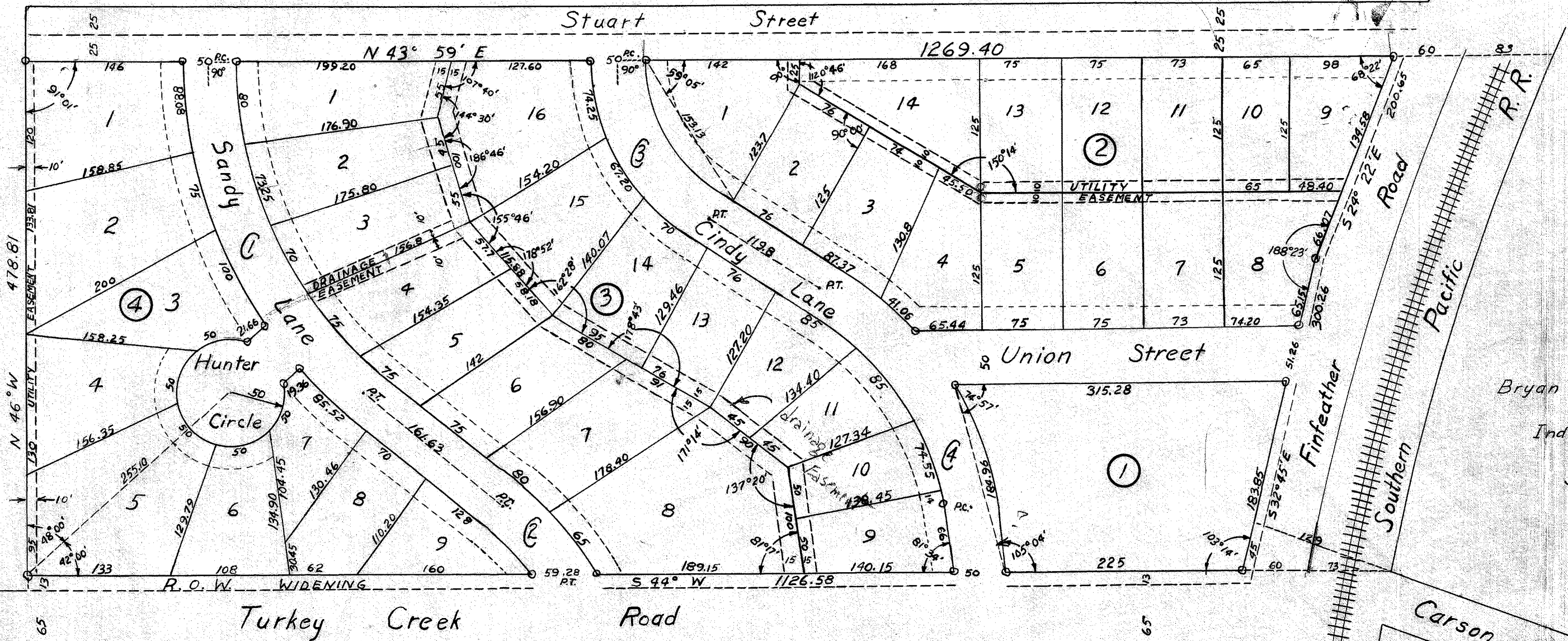
entire on land base
3/15/2000
WD

Note: All distances shown on curves are chord distances

Note: 20' building line-front of each residential lot.



Huggins Tract



Bryan Industrial Sites

International Shoe Company

Access Road

Curve Data

①	②	③	④
D = 14° 00'	D = 19° 47'	D = 33° 14'	D = 20° 00'
T = 187.00	T = 42.24	T = 97.30	T = 134.05
Δ = 49° 05'	Δ = 16° 36'	Δ = 58° 34'	Δ = 50° 09'
L = 350.67	L = 84.21	L = 176.23	L = 250.75
R = 409.26	R = 289.69	R = 172.40	R = 286.48

263